



Determination of Hazardous Substances

TEST REPORT

Report No. : BCT140916R-001R
Applicant : Shenzhen Hongshanjieke Technology Co., Ltd.
Address : 6F, One Building, Friendship Industrial Zone, The 23 District, Baoan District, Shenzhen City
Products : Mobile Power
Model/P.O NO. : HSJ-015, HSJ-0XX (X=1, 2, 3, ... 9)
Brand Name : N/A
Country of Destination : Europe
Overall Comment: The total Lead, Cadmium, Mercury, Hexavalent Chromium, Polybrominated Biphenyls and Polybrominated Diphenylethers in the submitted samples comply with the requirement of RoHS Directive 2011/65/EU.
Issue Date : Sep. 24, 2014

Signed for and on behalf of
Shenzhen BCT Technology Co., Ltd.


William Liu, Manager



The results shown in this Test Report refer only to the sample(s) tested unless otherwise stated. This Test Report is issued by the company subject to its General Conditions of service printed overleaf. This Test Report shall not be reproduced except in full, without written approval of the company.

Prepared By:

Shenzhen BCT Technology Co., Ltd.

6F, Yantian Business Building, Bao'an Road, Bao'an District, Shenzhen, P.R.China.

CONSOLIDATED TEST DATA REPORT

NUMBER: BCT140916R-001R

DATA CONCLUSION:

Lead (Pb)

Cadmium (Cd)

Mercury (Hg)

Hexavalent Chromium (Cr6+)

Polybrominated Biphenyls (PBBs)

Polybrominated Diphenylethers (PBDEs)

No.	Parts / material name	Test Sample	Test Company	Report No. & Test Time	Test Data (ppm)
1	Electronic wire	Red PVC cover	CTI	RHS05G014696567C 2014-04-25	Cd:N.D. Pb:N.D. Hg:N.D. Cr ⁶⁺ :N.D. PBBs: N.D. PBDES:N.D
		Black PVC cover			Cd:N.D. Pb:N.D. Hg:N.D. Cr ⁶⁺ :N.D. PBBs: N.D. PBDES:N.D
		Silvery metal wire			Cd:N.D. Pb:37 Hg:N.D. Cr ⁶⁺ :N.D. PBBs: N.D. PBDES:N.D
2	Lithium polymer battery	Mixed all part	SGS	SHAEC1415306502 2014-08-06	Cd:N.D. Pb:14 Hg:23 Cr ⁶⁺ :N.D. PBBs: N.D. PBDES:N.D
3	Screw	Silvery-gray metal screw	SGS	CANEC1102038302 2012-06-02	Cd:N.D. Pb:N.D. Hg:N.D. Cr ⁶⁺ :N.D. PBBs: N.D. PBDES:N.D
4	White plastic	Housing (White)	CTI	RLSHE130995160239 2013-05-18	Cd:N.D. Pb:N.D. Hg:N.D. Cr ⁶⁺ :N.D. PBBs: N.D. PBDES:N.D

CONSOLIDATED TEST DATA REPORT

NUMBER: BCT140916R-001R

No.	Parts / material name	Test Sample	Test Company	Report No. & Test Time	Test Data (ppm)
5	USB Connect terminal	Silvery coating of metal	SGS	CANEC1302378002 2013-03-15	Cd:N.D. Pb:N.D. Hg:N.D. Cr ⁶⁺ :N.D.
		Golden metal sheet			Cd:N.D. Pb:125 Hg:N.D. Cr ⁶⁺ :N.D.
		White plastic part			Cd:N.D. Pb:N.D. Hg:N.D. Cr ⁶⁺ :N.D. PBBS: N.D. PBDES:N.D
6	Marking plate	Black ink	CTI	RLSZE001410210532 2014-03-21	Cd:N.D. Pb:N.D. Hg:N.D. Cr ⁶⁺ :N.D. PBBS: N.D. PBDES:N.D
7	Blue adhesive tape	Adhesive battery	CTI	RLSHE000995160002 2012-05-18	Cd:N.D. Pb:N.D. Hg:N.D. Cr ⁶⁺ :N.D. PBBS: N.D. PBDES:N.D
8	ABS	ABS	SGS	CE/2012/54994A 2012-05-31	Cd:N.D. Pb:N.D. Hg:N.D. Cr ⁶⁺ :N.D. PBBS: N.D. PBDES:N.D
9	SOD	Black Body	SGS	SHAEC1304701502 2013-04-15	Cd:N.D. Pb:N.D. Hg:N.D. Cr ⁶⁺ :N.D. PBBS:N.D. PBDES:N.D.
		Silver Metal Tin			Cd:N.D. Pb:N.D. Hg:N.D. Cr ⁶⁺ :N.D.
10	Black Body W/ Brown Printing	IC	SGS	GZ1311136135/CHEM 2013-12-10	Cd:N.D. Pb:5 Hg:N.D. Cr ⁶⁺ :N.D. PBBS:N.D. PBDES:N.D.

CONSOLIDATED TEST DATA REPORT

NUMBER: BCT140916R-001R

No.	Parts / material name	Test Sample	Test Company	Report No. & Test Time	Test Data (ppm)
11	Black Solid Body With Silvery Metal (Mix All)	SOT-23-3/5/6/8L, TSOT-23-3/5/6/8L, SOT-23-5L(FC) Product	SGS	SHAEC1302035423 2013-03-12	Cd:N.D. Pb:N.D. Hg:N.D. Cr ⁶⁺ :N.D. PBBS: N.D. PBDES:N.D.
12	Black Body	(T)SOT & SC Serials Package IC Noumenon	SGS	CE/2013/20110 2013-02-20	Cd:N.D. Pb:N.D. Hg:N.D. Cr ⁶⁺ :N.D. PBBS: N.D. PBDES:N.D.
13	Body	IC Discretetes, SOT-89 (Solder) :SO T-89	SGS	CE/2014/75798 2014-08-10	Cd:N.D. Pb:203 Hg:N.D. Cr ⁶⁺ :N.D. PBBS: N.D. PBDES:N.D.
	Mixed all silver colored metal pin and metal sheet				Cd:N.D. Pb:8 Hg:N.D. Cr ⁶⁺ :N.D.
14	SOT-26 (SOT23-3L/5L/6L)	Black body with silver metal	SGS	SHAEC1201559309 A01 2012-04-27	Cd:N.D. Pb:N.D. Hg:N.D. Cr ⁶⁺ :N.D. PBBS: N.D. PBDES:N.D.
15	Black body part (mix all)	SOP Green product-package part	SGS	SHAEC1322086705 2013-12-20	Cd:N.D. Pb:N.D. Hg:N.D. Cr ⁶⁺ :N.D. PBBS: N.D. PBDES:N.D.
16	Silvery metal pin part	SOP Green product-package part	SGS	SHAEC1322086705 2013-12-20	Cd:N.D. Pb:15 Hg:N.D. Cr ⁶⁺ :N.D. PBBS: N.D. PBDES:N.D.
17	PCB	Green PCB	SGS	CANML1315952801 2013-11-28	Cd:N.D. Pb:8 Hg:N.D. Cr ⁶⁺ :N.D. PBBS: N.D. PBDES:N.D.

CONSOLIDATED TEST DATA REPORT

NUMBER: BCT140916R-001R

No.	Parts / material name	Test Sample	Test Company	Report No. & Test Time	Test Data (ppm)
18	SOT-26 (SOT23-3L/5L/6L)	Black body with silver metal	SGS	SHAEC1301559309 A01 2013-04-27	Cd:N.D. Pb:N.D. Hg:N.D. Cr ⁶⁺ :N.D. PBBS: N.D. PBDES:N.D
19	SMD (SOT-23)	SMD (SOT-23)	SGS	CKGEC1300079501 2013-03-20	Cd:N.D. Pb:N.D. Hg:N.D. Cr ⁶⁺ :N.D. PBBS: N.D. PBDES:N.D
20	MLCC A (X5R) X (X6S) J (JIS-B) TYPE	MLCC A (X5R) X (X6S) J (JIS-B) TYPE	SGS	F690101/LF-CTSAYAA 13-06136 2013-02-07	Cd:N.D. Pb:N.D. Hg:N.D. Cr ⁶⁺ :N.D. PBBS: N.D. PBDES:N.D
21	MLCC B (X7R) TYPE	MLCC B (X7R) TYPE	SGS	F690101/LF-CTSAYAA 13-06135 2013-02-07	Cd:N.D. Pb:N.D. Hg:N.D. Cr ⁶⁺ :N.D. PBBS: N.D. PBDES:N.D
22	MLCC C (COG) TYPE	MLCC C (COG) TYPE	SGS	F690101/LF-CTSAYAA 13-06138 2013-02-07	Cd:N.D. Pb:N.D. Hg:N.D. Cr ⁶⁺ :N.D. PBBS: N.D. PBDES:N.D
23	MLCC C (COG) Cu TYPE	MLCC C (COG) Cu TYPE	SGS	F690101/LF-CTSAYAA 13-06134 2013-02-07	Cd:N.D. Pb:N.D. Hg:N.D. Cr ⁶⁺ :N.D. PBBS: N.D. PBDES:N.D
24	MLCC F (Y5V) TYPE	MLCC F (Y5V) TYPE	SGS	F690101/LF-CTSAYAA 13-06137 2013-02-07	Cd:N.D. Pb:N.D. Hg:N.D. Cr ⁶⁺ :N.D. PBBS: N.D. PBDES:N.D

CONSOLIDATED TEST DATA REPORT

NUMBER: BCT140916R-001R

No.	Parts / material name	Test Sample	Test Company	Report No. & Test Time	Test Data (ppm)
25	General purpose chip resistors (Black/White/Silver General purpose chip resistors)	General purpose chip resistors	SGS	KA/2012/C0586 2013-01-04	Cd:N.D. Pb:938 Hg:N.D. Cr ⁶⁺ :N.D. PBBS: N.D. PBDES:N.D
26	RC0402 Series	General purpose chip resistors	SGS	KA/2012/C0587 2013-01-04	Cd:N.D. Pb:N.D. Hg:N.D. Cr ⁶⁺ :N.D. PBBS: N.D. PBDES:N.D
27	RC0603 Series	General purpose chip resistors	SGS	KA/2012/C0588 2013-01-04	Cd:N.D. Pb:354 Hg:N.D. Cr ⁶⁺ :N.D. PBBS: N.D. PBDES:N.D
28	RC0805 Series	General purpose chip resistors	SGS	KA/2012/C0589 2013-01-04	Cd:N.D. Pb:339 Hg:N.D. Cr ⁶⁺ :N.D. PBBS: N.D. PBDES:N.D
29	Black part w/white printing, copper-colored & silvery metal edge (mixed)	Fixed inductors for surface mounting	SGS	CANEC1214099601 2012-10-27	Cd:N.D. Pb:N.D. Hg:N.D. Cr ⁶⁺ :N.D. PBBS: N.D. PBDES:N.D
30	MLCC A (X5R) X (X6S) J (JIS-B) TYPE	MLCC A (X5R) X (X6S) J (JIS-B) TYPE	SGS	F690101/LF-CTSAYAA 13-06136 2013-02-07	Cd:N.D. Pb:N.D. Hg:N.D. Cr ⁶⁺ :N.D. PBBS: N.D. PBDES:N.D

CONSOLIDATED TEST DATA REPORT

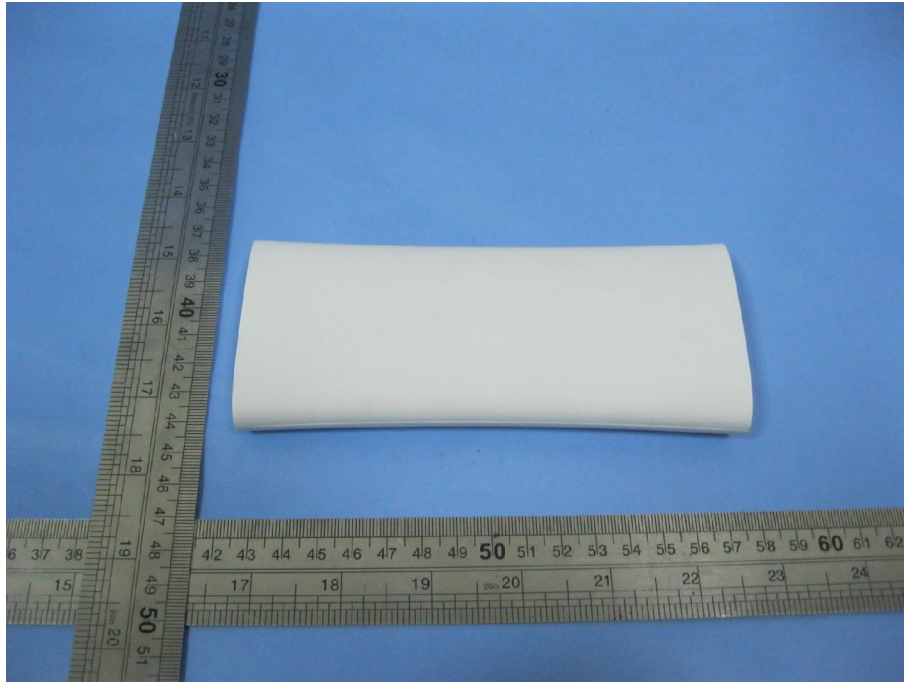
NUMBER: BCT140916R-001R

Note:

- (1) N.D.= Not detected (<MDL)
- (2) MDL=Method Detection Limit
- (3) ppm = mg/kg
- (4) "-" = Not applicable
- (5) "<" = less than
- (6) Negative = Absence of CrVI coating (The test sample should be further verified by boiling-water-extraction method if the spot test result is negative or cannot be confirmed.

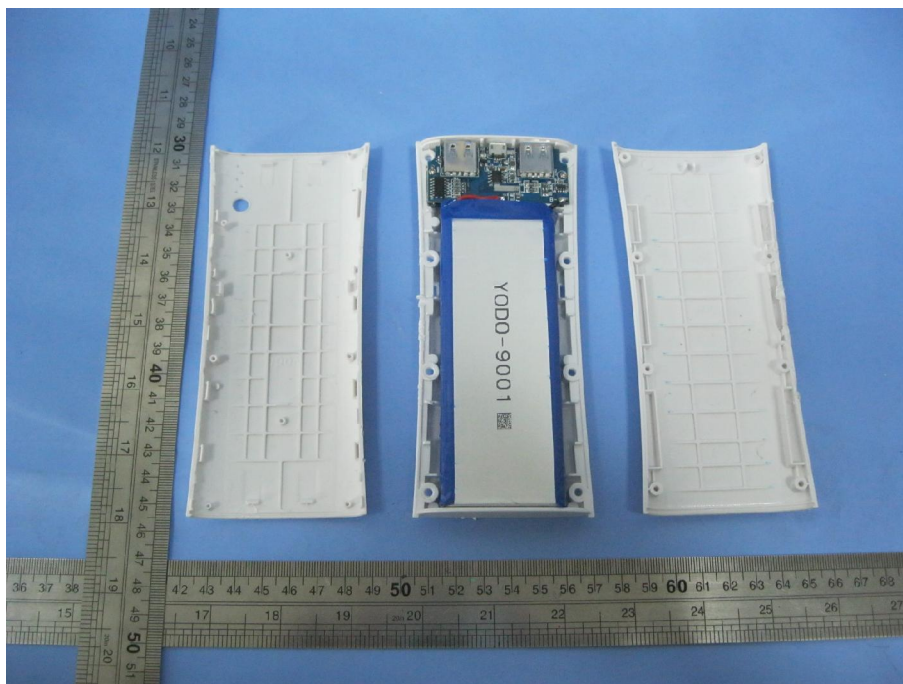
PRODUCT PHOTOGRAPHS

Model: HSJ-015



CONSOLIDATED TEST DATA REPORT

NUMBER: BCT140916R-001R



***** End of Report *****